

Shown with Optional Exterior Features

These are artist renditions for sales purposes only.

Refer to working drawings for actual dimensions.

© 2023 Nationwide Homes, Inc. All Rights Reserved.



LANDMARK WESTBURY II



A MULTI-FAMILY COLLECTION
BY NATIONWIDE HOMES est. 1959

SQUARE FOOTAGE 1,828

3+ Bedroom

3.5 Bathroom



WESTBURY II

Total Finished Area:
1,828 Sq. Ft. Per Residence

Dimensions:
31'8"W x 58'0"D

3+ Bedrooms
3.5 Bathrooms

Two-Story

Extensive Kitchen Bartop

Walk-in Closet

Open Concept

Rectangular Lavatory Sinks

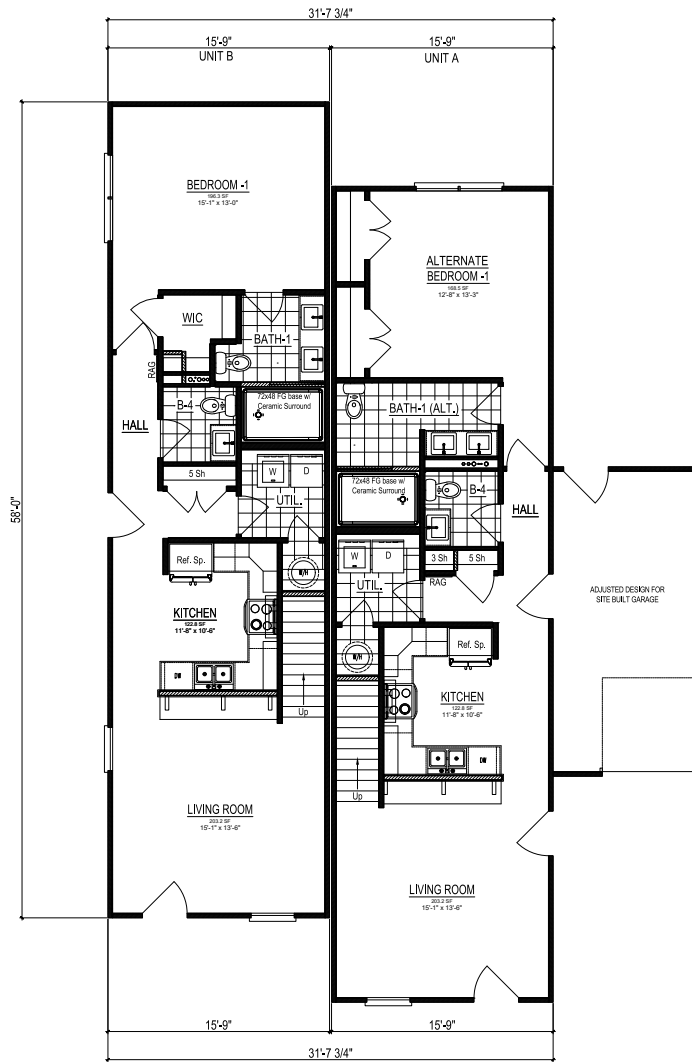
Optional Garage



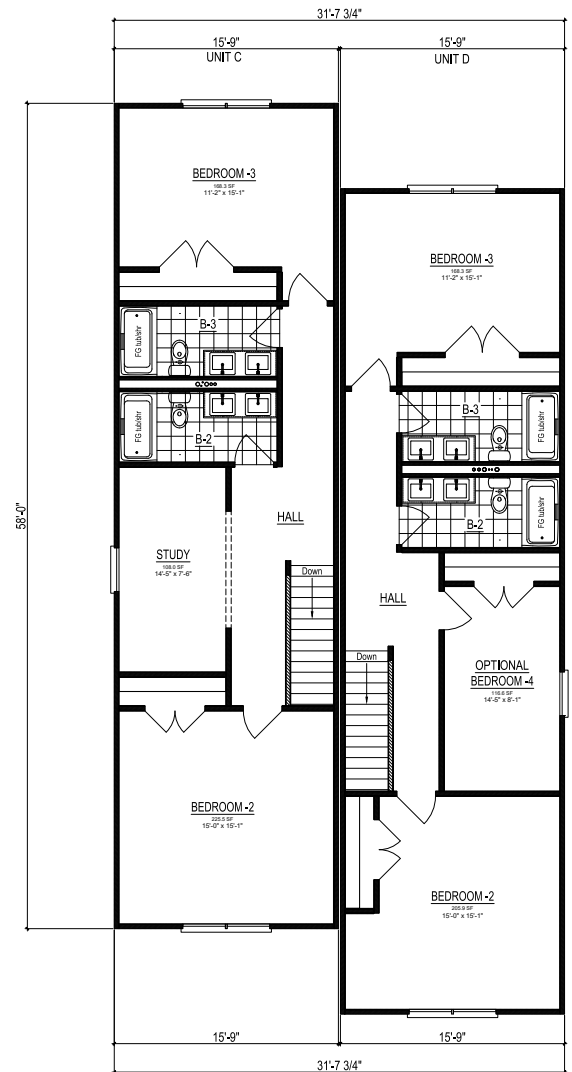
nationwide-homes.com

facebook.com/nationwidehome

instagram.com/nationwidehomes



First Floor 914 SQ. FT.
(1,828 SQ.FT. per Living Unit)



Second Floor 914 SQ. FT.
(1,828 SQ.FT. per Living Unit)

LANDMARK
A MULTI-FAMILY COLLECTION

Shown with Optional Interior and Exterior Features

These are artist renditions for sales purposes only. Refer to working drawings for actual dimensions. © 2023 Nationwide Homes 02/2023

