



# OAK

**SQUARE FOOTAGE 1,771**

3 Bedrooms 2.5 Bathrooms



## ELEVATION A

**Exterior Shown with Standard 12/12 Roof Pitch  
Shown with Optional Exterior Features**

These are artist renditions for sales purposes only. Refer to working drawings for actual dimensions.  
© 2022 Nationwide Homes, Inc. All Rights Reserved.







**OAK**

**Total Potential Area:**  
**1,771 Sq. Ft.**  
 1,106 Sq. Ft. Finished  
 665 Sq. Ft. Unfinished

**Dimensions:**  
 64'0"W x 41'7"D

**3 Bedrooms**  
**2.5 Bathrooms**

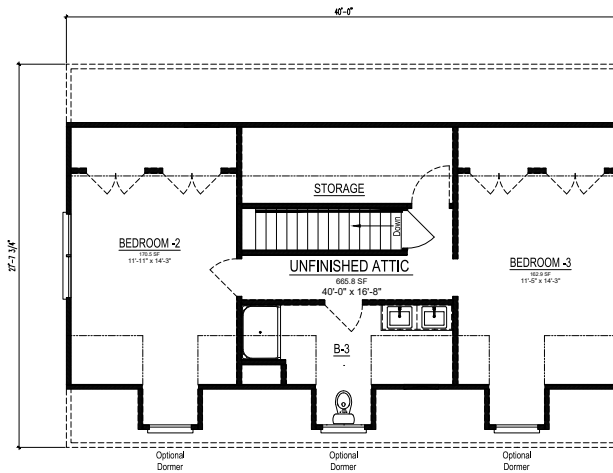
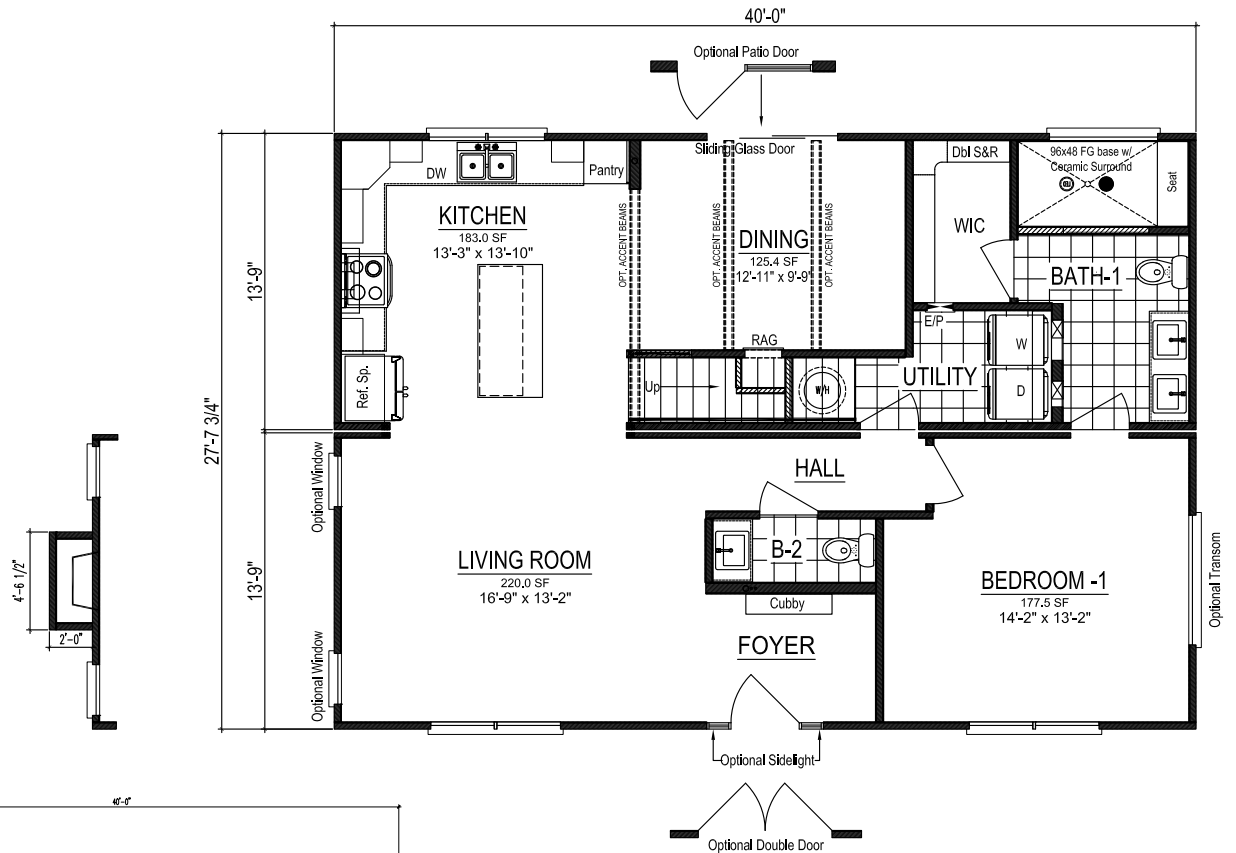
- Defined Foyer
- Foyer Cubby & Bench
- Extended Kitchen Island
- Kitchen Pantry Cabinet
- Formal Dining Room
- Rectangular Lavatory Sinks
- Ceramic Tile Shower 4x8'
- Walk-in Closet



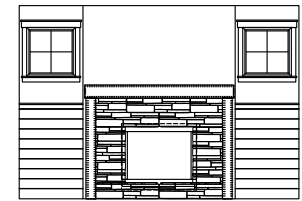
nationwide-homes.com

facebook.com/nationwidehome

instagram.com/nationwidehomes



SUGGESTED UPPER LEVEL LAYOUT IF FINISHED



Optional Fireplace Feature Wall

**FARMHOUSE ELEVATION B**



**Shown with Optional Interior and Exterior Features**

These are artist renditions for sales purposes only.  
 Refer to working drawings for actual dimensions.

© 2022 Nationwide Homes (Spring 2022)

