



# THE CRAVEN III

**SQUARE FOOTAGE 1,887**

2 Bedrooms 2.5 Bathrooms



## Shown with Optional Exterior Features

These are artist renditions for sales purposes only. Refer to working drawings for actual dimensions.

© 2020 Nationwide Homes, Inc. All Rights Reserved.





## THE CRAVEN III

**Total Potential Area:**  
**1,887 Sq. Ft.**  
 1,079 Sq. Ft. Finished  
 808 Sq. Ft. Unfinished

**Dimensions:**  
 27'8"W x 42'0"D

**2 Bedrooms**  
**2.5 Bathrooms**

Cape-Cod Style

Kitchen Pantry

Factory Built Porch

Rectangular Lavatory Sinks

Walk-in Closet

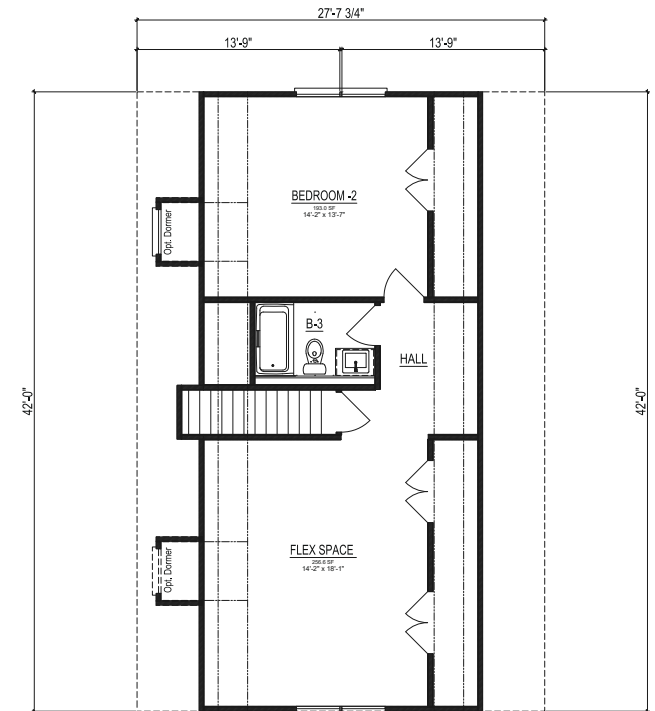
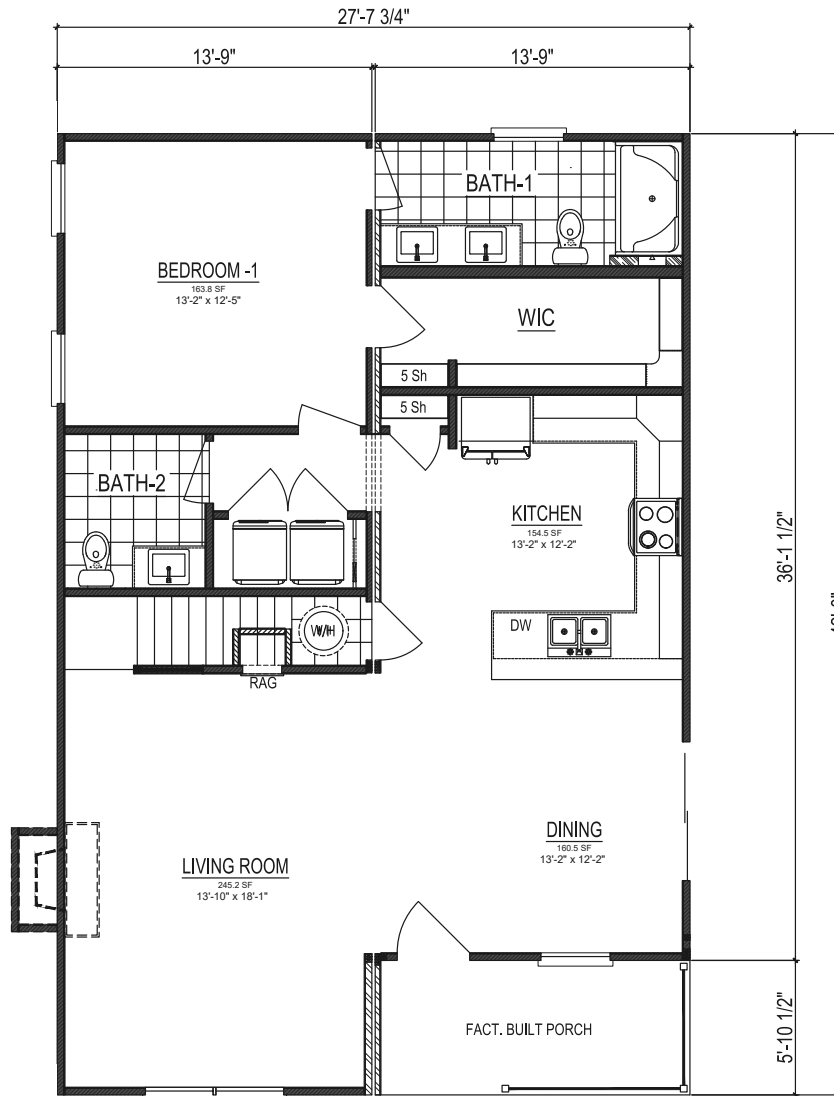
Potential Flex Space



[nationwide-homes.com](http://nationwide-homes.com)

[facebook.com/nationwidehome](https://facebook.com/nationwidehome)

[instagram.com/nationwidehomes](https://instagram.com/nationwidehomes)



SUGGESTED UPPER LEVEL LAYOUT IF FINISHED



### Shown with Optional Interior and Exterior Features

These are artist renditions for sales purposes only.

Refer to working drawings for actual dimensions.

© 2020 Nationwide Homes (Summer 2020)

