



CHATHAM II

SQUARE FOOTAGE 2,130

3 Bedrooms 2.5 Bathrooms



ELEVATION A

**Exterior Shown with Standard 7/12 Roof Pitch
Shown with Optional Exterior Features**

These are artist renditions for sales purposes only. Refer to working drawings for actual dimensions.
© 2022 Nationwide Homes, Inc. All Rights Reserved.





CHATHAM II

Total Finished Area:
2,130 Sq. Ft.

1,273 Sq. Ft. Finished
857 Sq. Ft. Finished

Dimensions:
41'7"W x 34'0"D

3 Bedrooms
2.5 Bathrooms

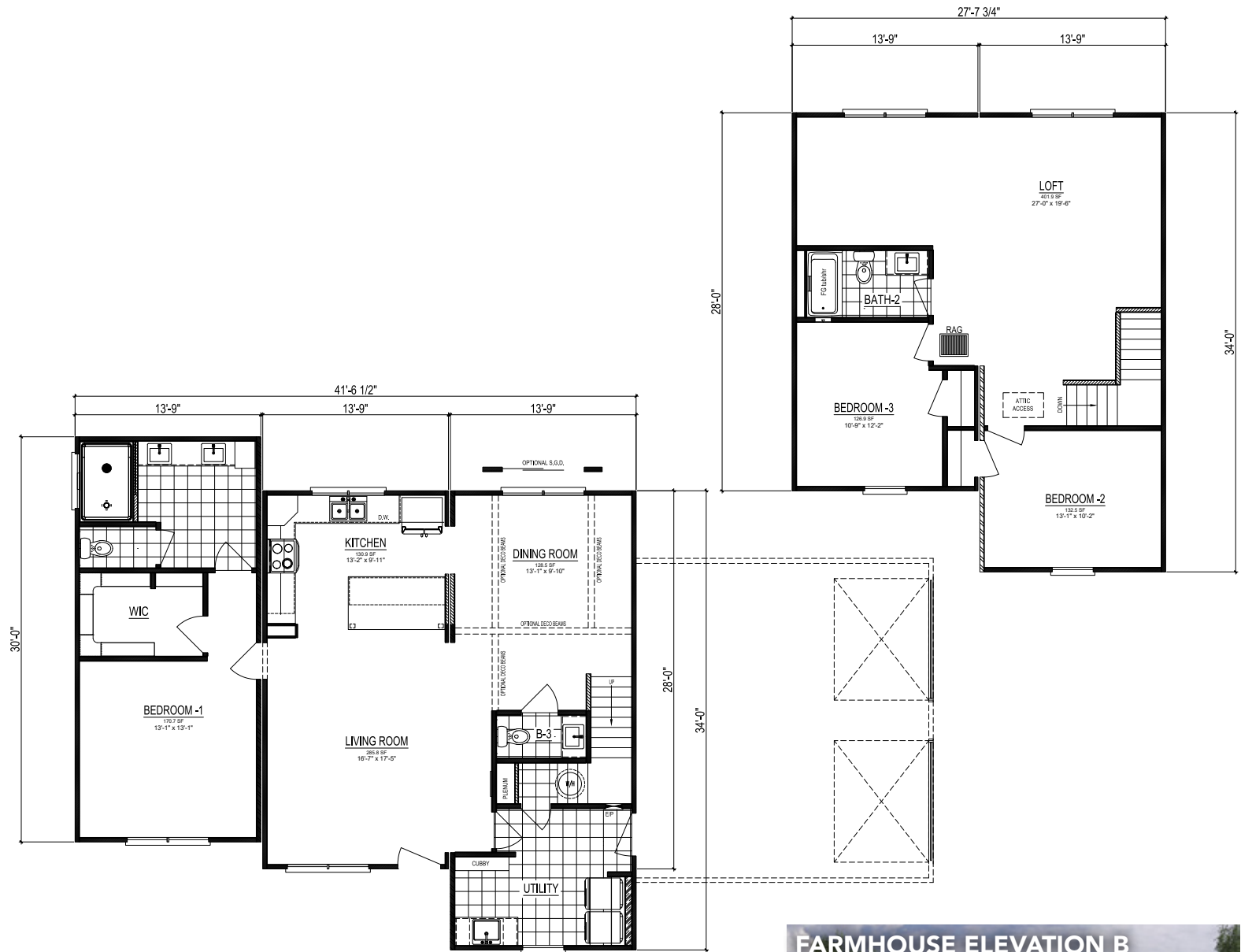
- Generous Utility Room
- Utility Cubby & Bench
- Over-sized Kitchen Island
- 1st Floor Primary Bedroom
- Recreational Loft Space
- Rectangular Lavatory Sinks
- Free-Standing Bathtub
- Walk-in Closet



nationwide-homes.com

facebook.com/nationwidehome

instagram.com/nationwidehomes



Shown with Optional Interior and Exterior Features

These are artist renditions for sales purposes only.

Refer to working drawings for actual dimensions.

© 2022 Nationwide Homes (Spring 2022)

