



BAYVIEW

SQUARE FOOTAGE 1,255

3 Bedrooms 2 Bathrooms



ELEVATION A

**Exterior Shown with Standard 7/12 Roof Pitch
Shown with Optional Exterior Features**

These are artist renditions for sales purposes only. Refer to working drawings for actual dimensions.
© 2022 Nationwide Homes, Inc. All Rights Reserved.





BAYVIEW

Total Finished Area:

1,255 Sq. Ft.

Dimensions:

27'8"W x 52'0"D

3 Bedrooms

2 Bathrooms

Defined Foyer

Foyer Cubby & Bench

U-Shaped Kitchen Design

Elongated Factory-Built Porch

Rectangular Lavatory Sinks

Hall Linen Cabinet

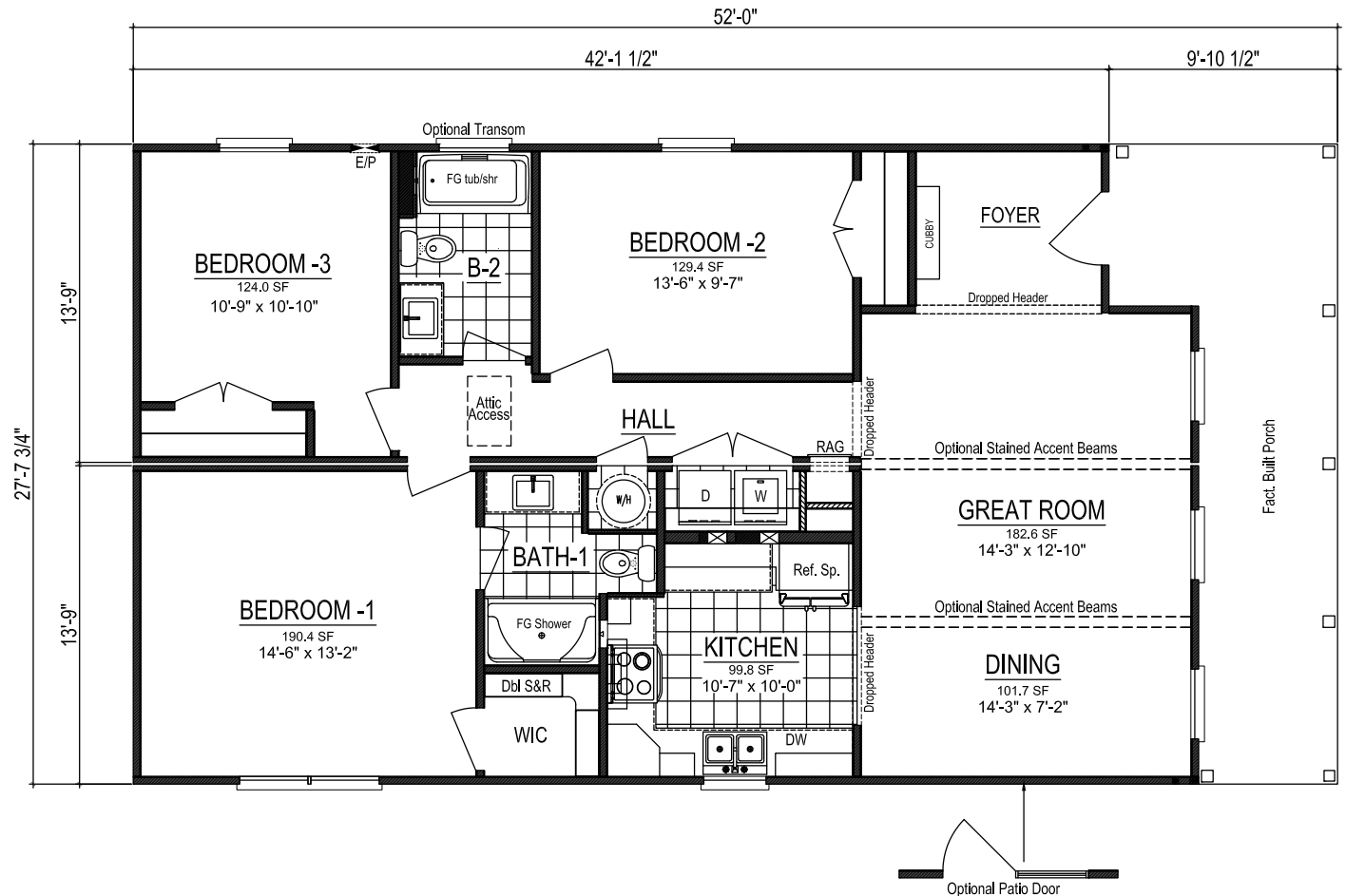
Walk-in Closet



nationwide-homes.com

facebook.com/nationwidehome

instagram.com/nationwidehomes



Shown with Optional Interior and Exterior Features

These are artist renditions for sales purposes only.

Refer to working drawings for actual dimensions.

© 2022 Nationwide Homes (Spring 2022)

