

**Shown with Optional Exterior Features**

These are artist renditions for sales purposes only.  
Refer to working drawings for actual dimensions.  
© 2020 Nationwide Homes, Inc. All Rights Reserved.



**LANDMARK** **SANIBEL** DUPLEX

A MULTI-FAMILY COLLECTION  
BY NATIONWIDE HOMES est. 1959

**SQUARE FOOTAGE 914**    2 Bedroom    1 Bathroom





## SANIBEL DUPLEX

**Total Finished Area:**  
 914 Sq. Ft. Per Residence  
 1,828 Sq. Ft. Per Total

**Dimensions:**  
 31'9"W x 64'0"D

**2 Bedrooms**  
**2 Bathrooms**

Ranch-Style

Open Concept

Factory-Built Porch

Rectangular Lavatory Sinks

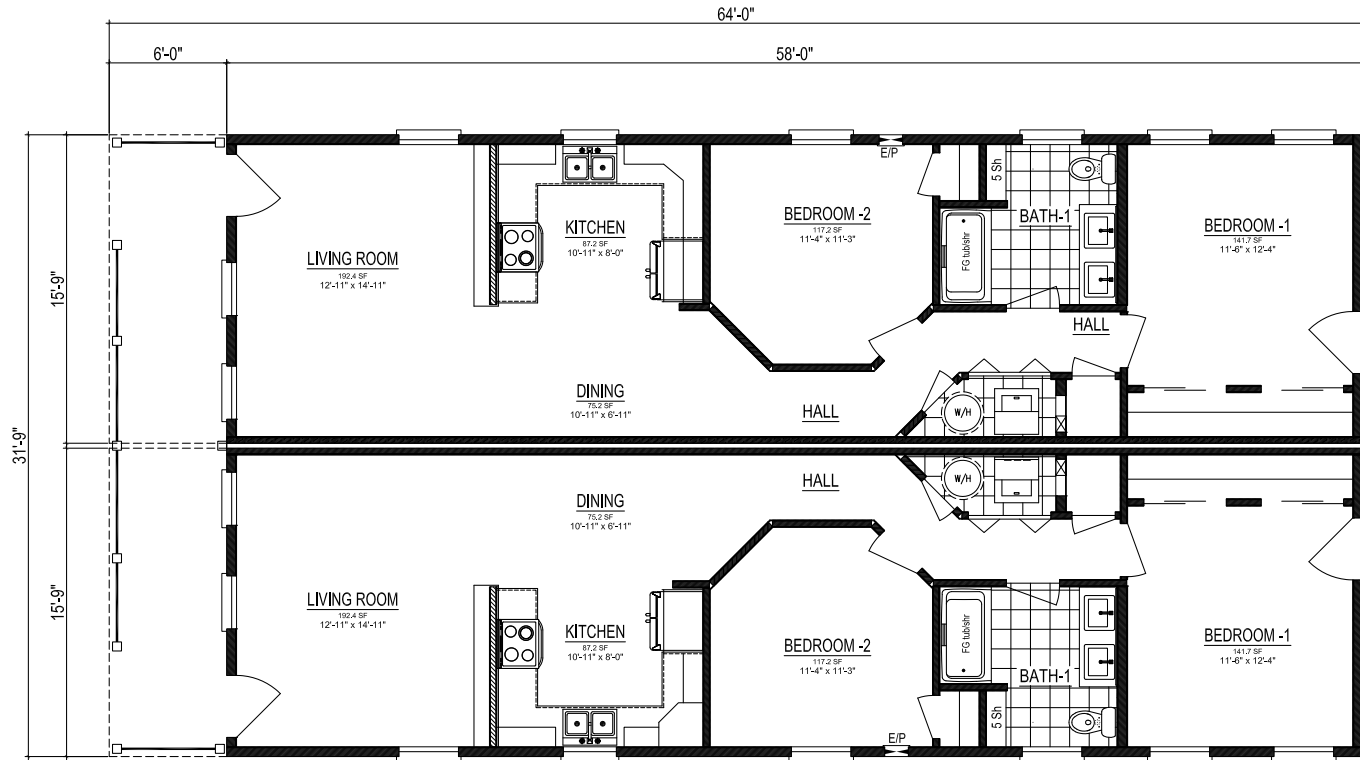
Additional Hall Storage



[nationwide-homes.com](http://nationwide-homes.com)

[facebook.com/nationwidehome](https://facebook.com/nationwidehome)

[instagram.com/nationwidehomes](https://instagram.com/nationwidehomes)



# LANDMARK

A MULTI-FAMILY COLLECTION

Shown with Optional Interior and Exterior Features

These are artist renditions for sales purposes only. Refer to working drawings for actual dimensions. © 2020 Nationwide Homes 01/31/20

