

HORIZON III XL

SQUARE FOOTAGE 2,089

3+ Bedrooms 2 Bathrooms



**Exterior Shown with Standard 7/12 Roof Pitch
Shown with Porch and Optional Exterior Features**

These are artist renditions for sales purposes only. Refer to working drawings for actual dimensions.

© 2023 Nationwide Homes, Inc. All Rights Reserved.





HORIZON III XL

HORIZON III XL

Total Finished Area:
2,089 Sq. Ft.

Dimensions:
66'0"W x 31'8"D

3 Bedrooms
2 Bathrooms

Open-Concept

Split-Bedroom Design

Extended Kitchen Island

Walk-in Kitchen Pantry

Den/Office Flex Space

Walk-in Closet

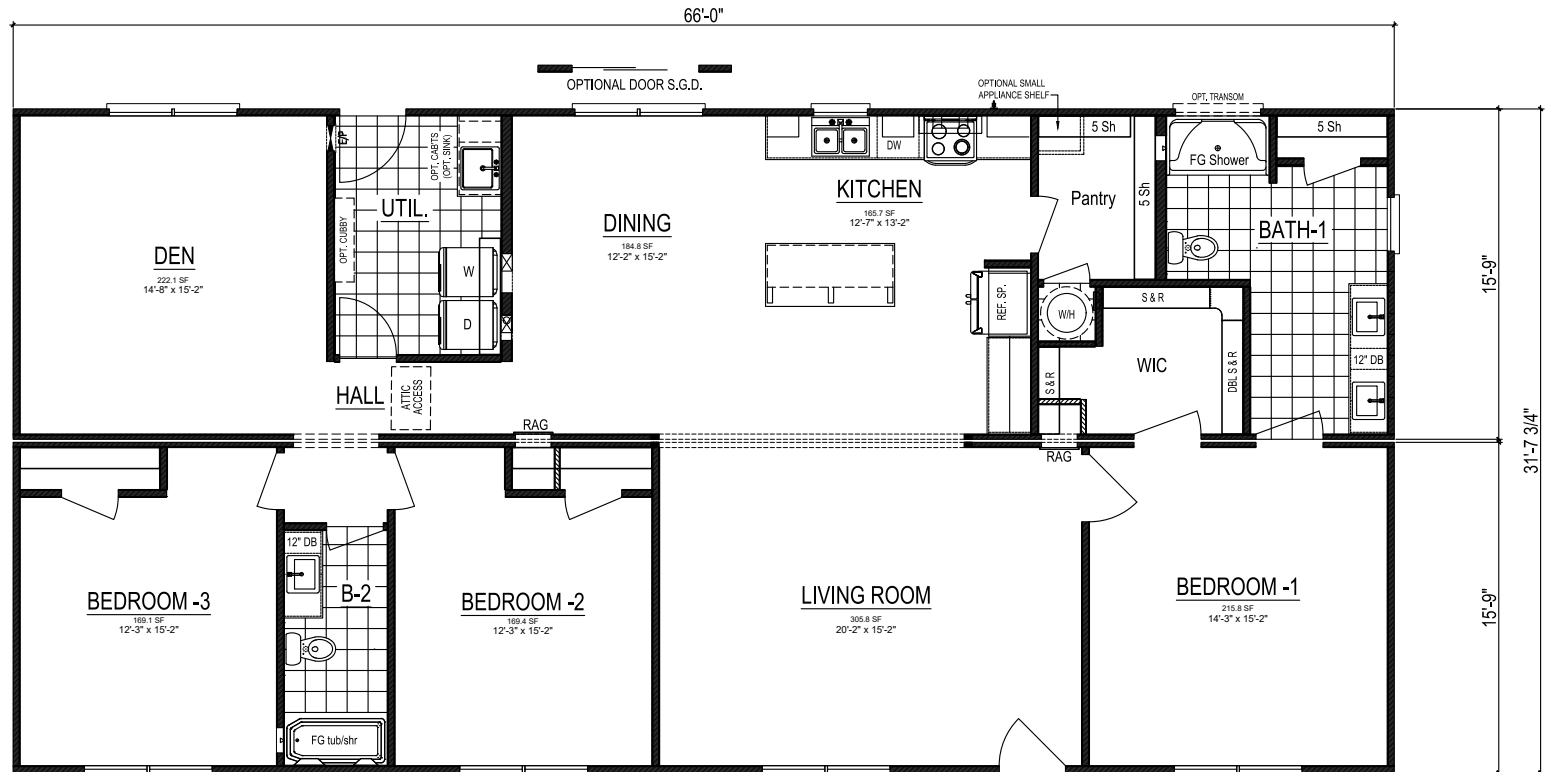
Rectangular Lavatory Sinks



nationwide-homes.com

facebook.com/nationwidehome

instagram.com/nationwidehomes



Shown with Optional Interior and Exterior Features

These are artist renditions for sales purposes only.

Refer to working drawings for actual dimensions.

© 2023 Nationwide Homes (Spring 2023)



HORIZON III XL

Optional Four Bedroom

HORIZON III XL

Total Finished Area:
2,089 Sq. Ft.

Dimensions:
66'0"W x 31'8"D

4 Bedrooms

2 Bathrooms

Open-Concept

Split-Bedroom Design

Extended Kitchen Island

Central Utility Room

Walk-in Closet

Rectangular Lavatory Sinks



nationwide-homes.com

facebook.com/nationwidehome

instagram.com/nationwidehomes



Shown with Optional Interior and Exterior Features

These are artist renditions for sales purposes only.

Refer to working drawings for actual dimensions.

© 2023 Nationwide Homes (Spring 2023)

