



WHITFIELD

SQUARE FOOTAGE 1,916

3+ Bedrooms

2 Bathrooms



Exterior Shown with Standard 7/12 Roof Pitch
Shown with Optional Exterior Features

These are artist renditions for sales purposes only. Refer to working drawings for actual dimensions.
© 2022 Nationwide Homes, Inc. All Rights Reserved.





WHITFIELD

Total Finished Area:
1,916 Sq. Ft.

Dimensions:
60'0"W x 41'7"D

3+ Bedrooms
2 Bathrooms

Formal Foyer

Cubby & Bench

Extended Kitchen Island

Walk-in Kitchen Pantry

Rectangular Lavatory Sinks

Free-Standing Bathtub

Vast Walk-in Closets

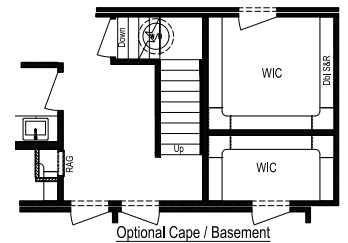
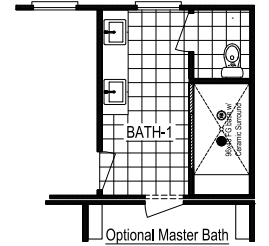
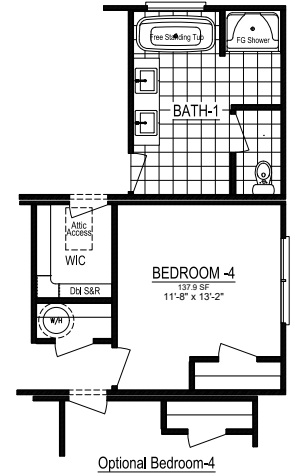
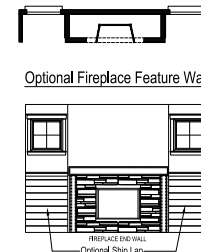
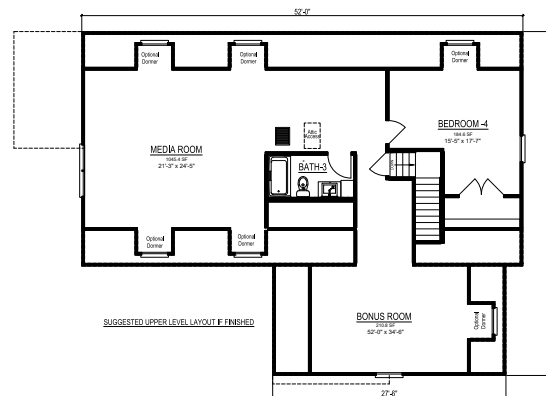
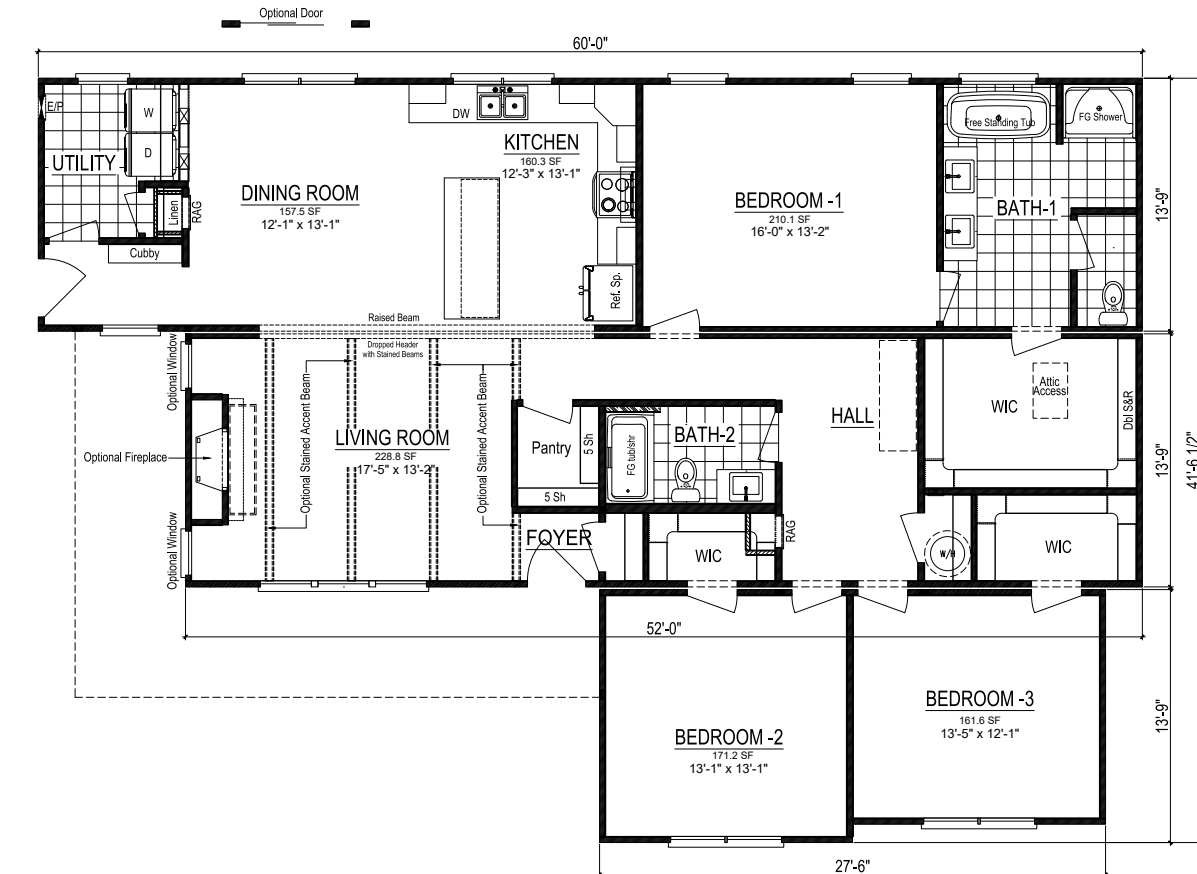
Potential Cape Option



nationwide-homes.com

facebook.com/nationwidehome

instagram.com/nationwidehomes



CAPE OPTION



Shown with Optional Interior and Exterior Features

These are artist renditions for sales purposes only.

Refer to working drawings for actual dimensions.

© 2022 Nationwide Homes (Spring 2022)

