

# West-Core Storm Door

from  
*West Window Corporation*

***Solid Protection...***



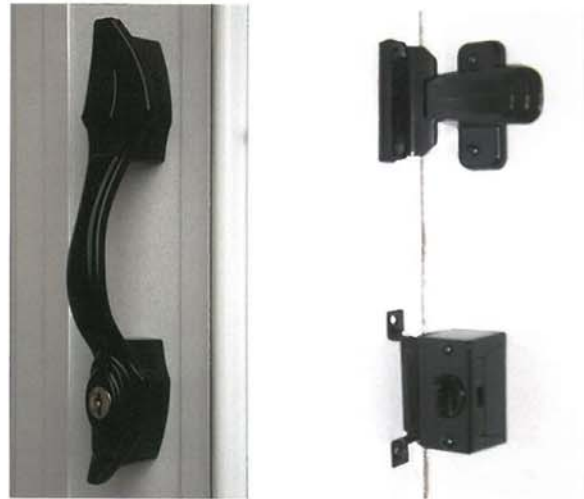
## Model 84-FV

The large tempered glass opening in this striking full view door provides a clear view of the outside world and lets in maximum light while protecting your home from weathering elements.

Standard Features include:

- 5/8" Clear Insulated glass
- Five heavy-duty concealed hinges.
- Heavy-Duty adjustable door Closer.
- Available in White, Bronze, or Tan Color.

**Standard Black Hardware with keylock**



***available for your***

**NATIONWIDE**  
*Homes*

HIPERFORMANCE BUILDERS

# West Aluminum Storm Door

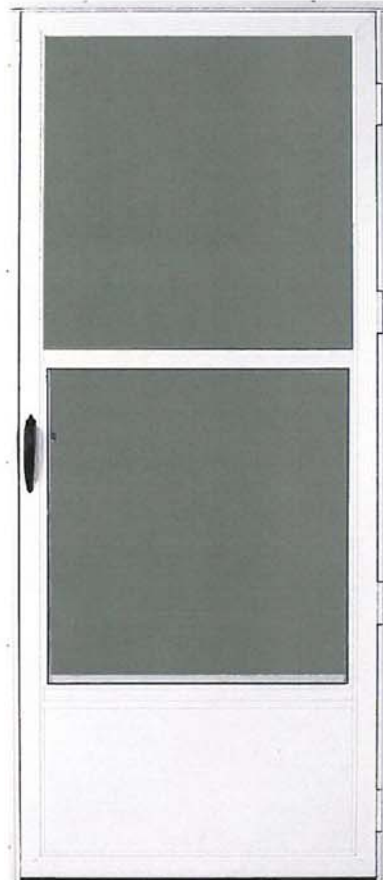
from

 *West Window Corporation*

**Model 58 Full View**



**Model 50 Self-Storing**



Often, ornate primary entrance doors are exposed to the elements because the homeowner doesn't want the view of the door obscured. The low profile design of the model 58 maximizes the available glass area, making it the perfect choice to showcase, and at the same time protect expensive entrance doors.

Available in Black, White, Bronze or Tan

The workhorse of our aluminum storm door line, the Model 50-EL features a stationary top glass and a bottom sash which can be raised for ventilation. When a self-storing storm door is required, the 50-EL is the obvious choice.

Available in White, Bronze or Tan

 *West Window Corporation*

P.O. Drawer 3071  
Martinsville, Virginia 24115  
Phone (276) 638-2394  
[www.westwindow.com](http://www.westwindow.com)

**NATIONWIDE**  
*Homes*  
HIPERFORMANCE BUILDERS

111 Rives Road  
P.O. Box 5511  
Martinsville, Virginia 24117  
Phone: (276) 632-7100  
Fax: (276) 632-1181  
[www.nationwide-homes.com](http://www.nationwide-homes.com)



# West-Premier™ Vinyl Sliding Door

from

 *West Window Corporation*



*Add beauty and style to your home with the West-Premier™ Vinyl Sliding Door.*

*The slim-line design is as energy efficient and dependable as it is attractive. With the West-Premier™ Sliding Door, natural light is maximized without sacrificing strength and durability.*

*Insulated glass and multi-wall vinyl frames combine to reduce heat transfer through the door, providing a greater level of comfort inside your home all year 'round.*

***Beauty,  
Strength  
and Style...***



*featured in*

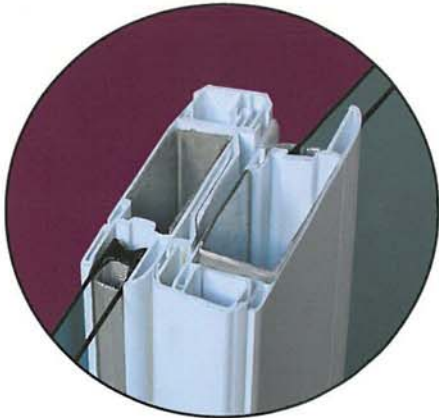
**NATIONWIDE**  
*Homes*

HIPERFORMANCE BUILDERS

# West-Premier™ Vinyl Sliding Door

## Attractive, Durable, and Energy Efficient

Steel reinforced meeting rails for extra strength and protection.



Multi-cavity vinyl for years of easy care and energy saving beauty. Available in White or Tan

Extra deep panel interlocks have twin fin seal weatherstrip for maximum air leak protection.

Fusion welded frame and panels for strength and durability.



Powder coated curved handle with mortise latch and keylock standard.

7/8" Insulated tempered safety glass.



Optional 9/16" flat grid between the glass.



Heavy extruded aluminum screen with adjustable wheels at top and bottom for smooth operation.

Adjustable, tandem ball-bearing rollers on a stainless steel track ensures smooth, easy and quiet operation.

Manufactured By:

 *West Window Corporation*

P.O. Drawer 3071  
Martinsville, Virginia 24115  
Phone (276) 638-2394  
[www.westwindow.com](http://www.westwindow.com)

**NATIONWIDE**  
*Homes*

HIPERFORMANCE BUILDERS

111 Rives Road P.O. Box 5511  
Martinsville, Virginia 24115  
Phone: (276) 632-7100  
Fax: (276) 632-1181  
[www.nationwide-homes.com](http://www.nationwide-homes.com)