

6042HCWWP – EVERYDAY BATHS

inches (mm)

60 x 42 x 27 (1525 x 1070 x 685) • Fax on Demand #5093

SOAKER MODEL #6042HCW

WHIRLPOOL MODEL #6042HCWWP



FEATURES

- Alcove bath
- Integral arm rests
- Ergonomic backrest
- Integral tiling flange (3T)
- Integral skirt
- Slip-resistant textured bottom
- 8" wainscot
- Center rear drain
- Gelcoat surface
- 5-year limited warranty

Whirlpool Features:

- .75hp motor
- 4 directional hydrotherapy jets
- Color matched trim
- 2 air controls
- Pneumatic on/off control
- Advanced safety suction system

OPTIONS

- Removable access panel (whirlpool models)
- Designer drain, waste & overflow

AQUATIC ADVANTAGE

- National distribution
- 6 manufacturing facilities
- Private fleet
- Centralized customer service
- Field support
- 24-hour fax-on-demand

COLOR & TRIM OPTIONS

Stock	Premium
Almond (C)	Black (NA)
Biscuit (C)	Mexican Sand* (NA)
Bone (C)	Sand Bar* (NA)
Linen (C)	Sterling Silver (NA)
White (C)	

C = color matched trim

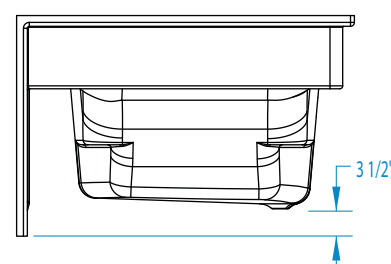
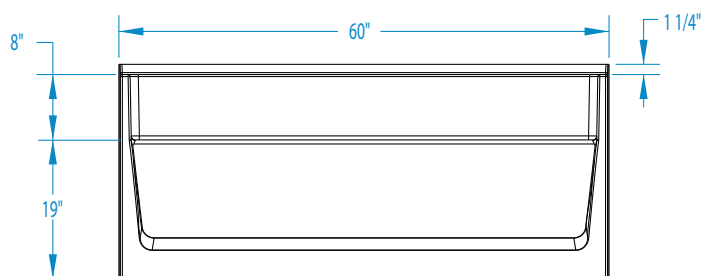
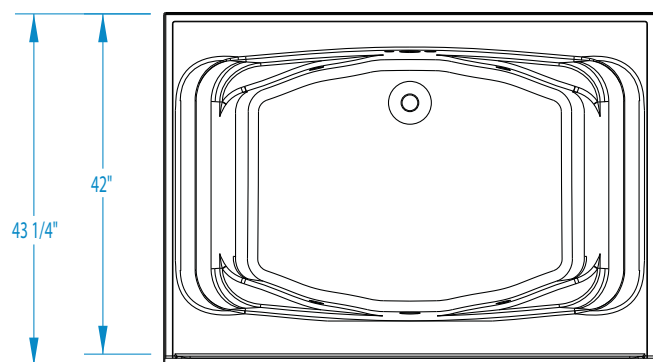
NA = not applicable

* color not available for whirlpool models



6042HCWWP

60 x 42 x 27 (1525 x 1070 x 685)
inches (mm)



FEATURES lbs (kg) Dimensional Tolerance $\pm \frac{3}{8}$ ". Dimensions needed for site preparation should be measured from the unit. Aquatic assumes no responsibility for preparatory work.

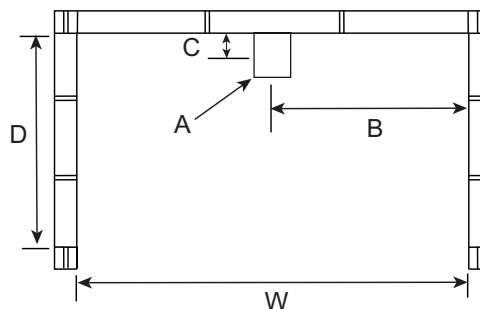
Model #	Material	Jets	Motor	Controls	Drain	Net Wt.	Pkg. Wt.
Soaker #6042HCW	Gelcoat	0	–	–	Center rear	93 (42)	98 (44)
Whirlpool #6042HCWWP	Gelcoat	4	0.75 HP	Pneumatic	Center rear	143 (65)	148 (67)

DIMENSIONS

Specifications	inches (mm)
Width: Overall / Net	60 (1525)
Depth: Overall / Net	43 1/4 (1100) / 42 (1070)
Height: Overall / Net	28 1/4 (720) / 27 (685)
Enclosure Opening	
Skirt Height	19 (485)
Drain Rough-In (from Back Wall)	3 3/4 (95)
Drain Rough-In (from Side Wall)	30 (760)
Drain: Diameter / Clearance	2 (50) / 3 1/2 (90)

FRAMING DIMENSIONS inches (mm)

Type	D Depth	W Width	H Height	A	B	C
Alcove	43 1/4 (1100)	60 1/8 (1525)	28 1/4 (720)	Box Out	30 (760)	3 3/4 (95)



SUMP DATA

Top of Drain to Bottom of Overflow	Capacity to Overflow gal (ltr)	Min. Operating Capacity gal (ltr)	WIDTH @ centerline		DEPTH @ centerline	
			Top	Bottom	Top	Bottom
11 3/4 (300)	60 (227)	48 (182)	54 (1370)	39 1/2 (1005)	33 3/16 (845)	30 1/2 (775)