

# HiPerformance Builders



TRADITIONAL ELEVATION

## THE BLUE RIDGE

**1st Floor - 1,048 Sq. Ft.**

**2nd Floor - 765 Unfinished Sq. Ft.**

**Total Finished Area - 1,048 Sq. Ft.**

Shown with optional exterior features.  
Garage not included.

These are artist renderings for sales purposes only.  
Refer to working drawings for actual dimensions.  
© 2010 Nationwide Homes 2/10

**NATIONWIDE**  
*Homes*

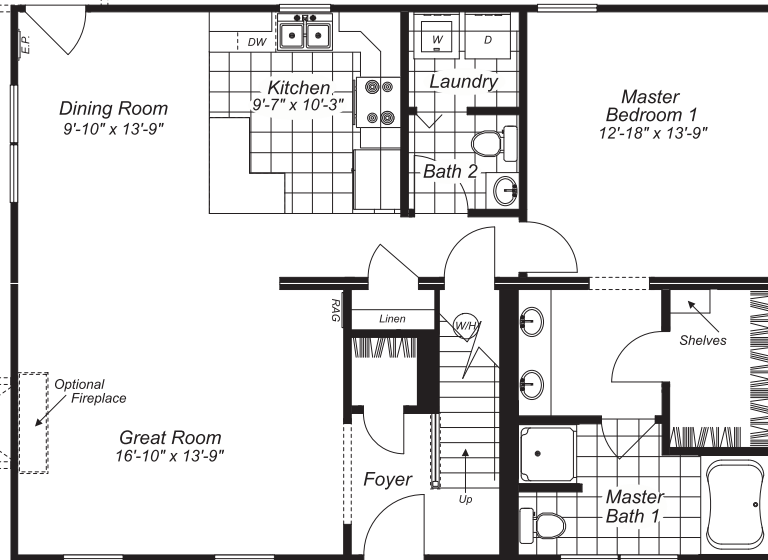
1100 Rives Road • P.O. Box 5511  
Martinsville, Virginia 24115  
Phone: (276) 632-7100  
Fax: (276) 666-2537  
[www.nationwide-homes.com](http://www.nationwide-homes.com)

*The Legacy Collection*

# THE BLUE RIDGE

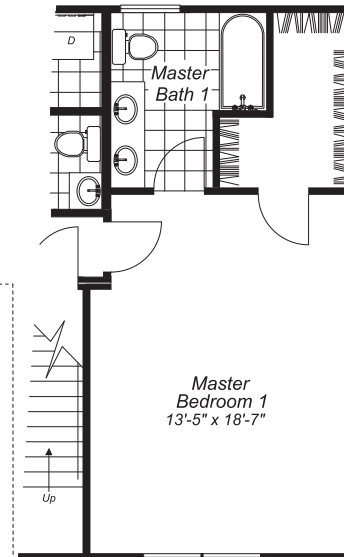
Optional Double Garage  
(Trim Kit)

## First Floor

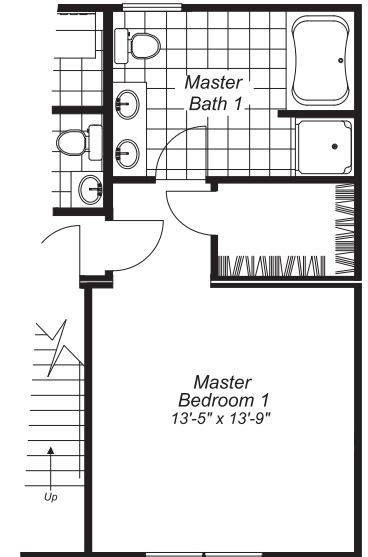


Optional 6' Wrap Around Porch  
(Trim Kit)

## Alt. 1 Master Bedroom



## Alt. 2 Master Bedroom



## Unfinished 2nd Floor

